



Product change notification number:
PCN_20150303_RMD25xx_Family_EOL

Date: 03.03.2015

Title: Redesign of the complete RM Display family 25xx

Product identification: Material-No. on Rating plate:

- 251007003
- 251007022
- 251007117
- 251007118
- 251007126
- 251007133

Reason for change: Design Logistics Logistics
 Manufacturing Location Quality/Reliability Material
 Expansion of product family End of life

Change description:

The TFT display module and the graphic controller used inside the RM Display 25xx family has reached EOL-status. Therefore we redesigned the complete device hardware with a new LED backlight based TFT display module and a change from the old 16 bit microcontroller concept to a new 32 bit ARM based microcontroller. Because of the mechanical differences of the new TFT display module we also changed the housing concept. On base of the same mounting hole size our customers will be able to switch from the old RM Display 2500 design to the new RM Display 5000 design, perhaps in some cases with changes of the display configuration.

Identification method to distinguish the change:

The new display family will be available in the following variants:

- RM Display 5001 (Material No. 251007150)
 Features:
 - 2 x CAN (ISO 11898-2)
 - 2 x analog input
 - 2 x digital output
 - 6 x buttons
 - 1 x USB
 - 1 x Ethernet
 - 1 x Buzzer
 - Temperature range: -30 °C ... +65 °C
 - DC power supply: 9 V ... 32 V
 - Degree of protection: IP 65

- RM Display 5002 (Material No. 251007151)
 Features:
 - 2 x CAN (ISO 11898-2)
 - 2 x analog input
 - 2 x digital output
 - 6 x buttons
 - 1 x USB
 - 1 x Ethernet
 - 1 x Buzzer
 - 1 x Bluetooth
 - Temperature range: -30 °C ... +65 °C
 - DC power supply: 9 V ... 32 V
 - Degree of protection: IP 65

© 2015 RM Michaelides Software & Elektronik GmbH • pcn_20150303_rm_display_25xx_family.docx • created by HauJ (15.05.2014)





Samples: available will be available soon not applicable

Qualifiable impact on quality and reliability:

None

Proposed first ship date*: Q4 / 2015

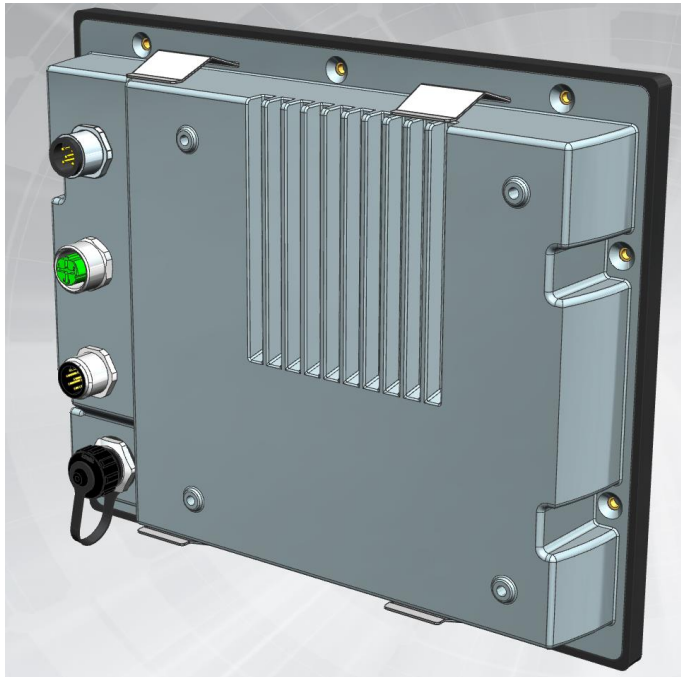
* The proposed first ship date is the forecasted date that a customer may expect to receive changed products. This is determined by the estimated date of inventory depletion on the PCN issue date. This may be affected by fluctuations in supply and demand. Consequently, although customers should be prepared to receive changed products on this date, RM will continue to ship pre-changed products until a time in which inventory has been depleted. This may result in pre-changed products being shipped to the customer after this forecasted date.

Last time order for old devices: 30.04.2015

RM contact:	Matthias Ruppel (D/A/CH) matthias.ruppel@rmcan.com	Brent Swearingen (USA/Canada) brent.swearingen@rmcan.com	Vlado Micetic (others) vlado.micetic@rmcan.com
-------------	--	--	--

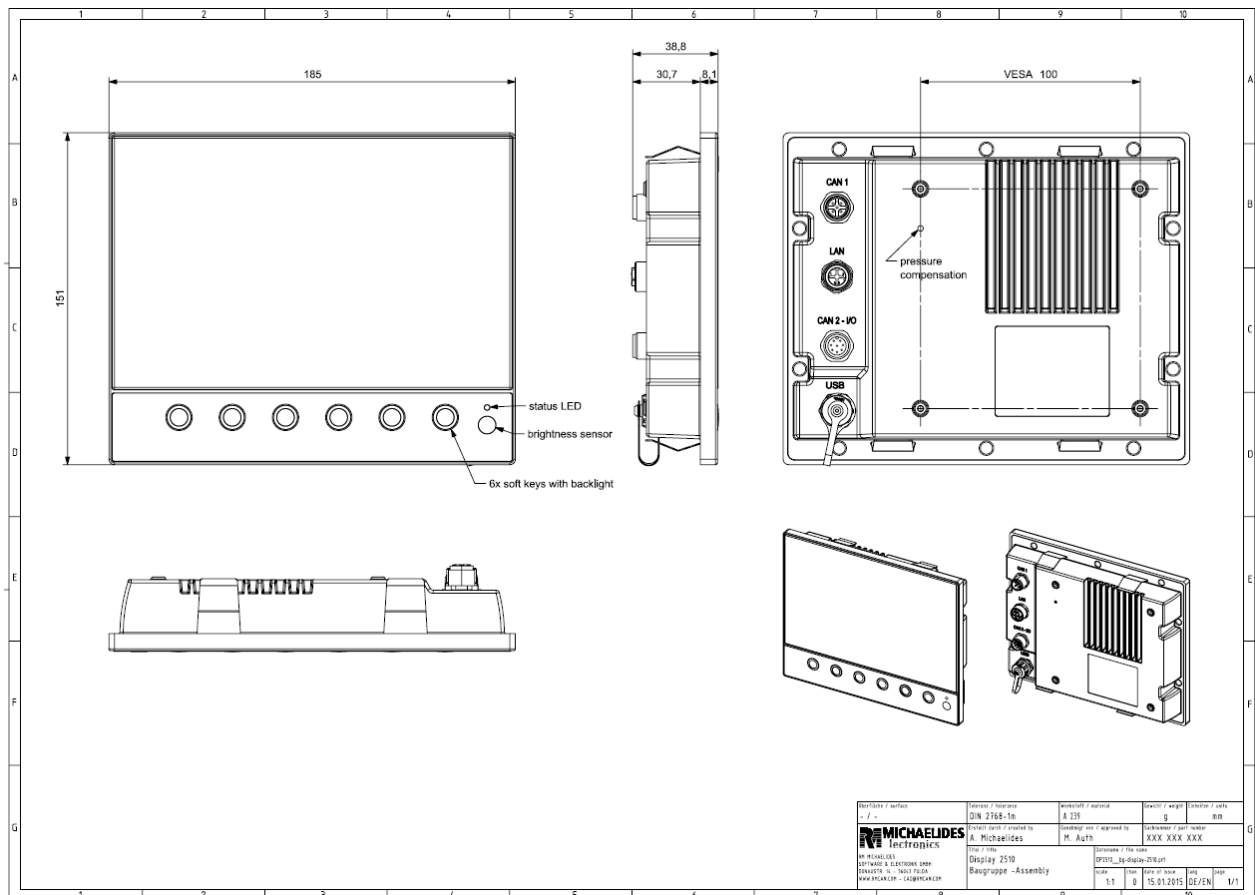
Appendix:

Mechanic and Interface graphics:



© 2015 RM Michaelides Software & Elektronik GmbH • pcn_20150303_rm_display_25xx_family.docx • created by HoU (15.05.2014)





© 2015 RM Michaelides Software & Elektronik GmbH • part_20150303_rm_display_25xx_family.docx • created by HoUJ (15.05.2014)

RM MICHAELIDES SOFTWARE & ELEKTRONIK GMBH



Donaustr. 14 | 36043 Fulda | Germany
Tel. +49 661 9490-0
Fax +49 661 9490-333
info@rmcan.com | rmcan.com

Managing Director
Dipl.-Ing. Robert Michaelides
HRB 1332 AG Fulda
VAT No. DE187044730

Sparkasse Fulda
Account 4400 6039 | Bank Code 530 501 80
IBAN DE25 5305 0180 0044 0060 39
BIC-/SWIFT-Code HELADEF1FDS

Commerzbank
Account 19082 7600 | Bank Code 530 400 12
IBAN DE20 5304 0012 0190 8276 00
BIC-/SWIFT-Code COBADEF530